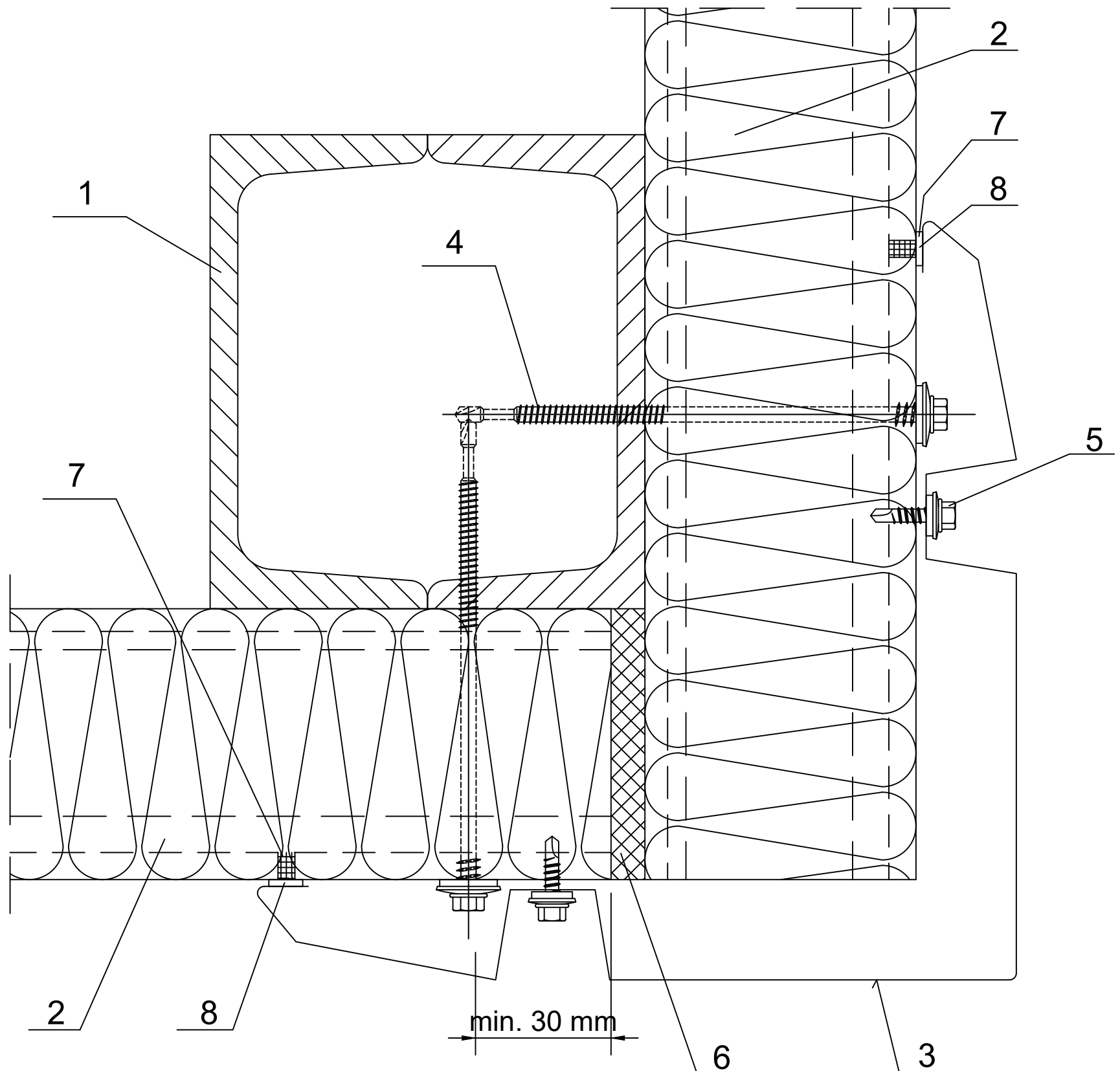


| | | | | |
|--------------------|-----------|-----------------------------|----------|------|
| Date | Rev. date | Work nr. | Drw. nr. | Rev. |
| Drawn by Ruukki | Rev. | M30/S33 | - | |
| Scale 1:2 | Building | File nr. P2001/003-00040 | | |



1. Steel column acc. to engineering design of the structure
2. Ruukki SP2D PIR
3. EA1B42 corner flashing (max. length of 3000 mm)
4. Panel fastener for hot-rolled column or for cold-bent column
5. L03 fastener
6. Impregnated polyurethane sealant or expanded foam
7. Permanently elastic sealing compound in panel joint
8. 4x10 PIR self-adhesive sealant